

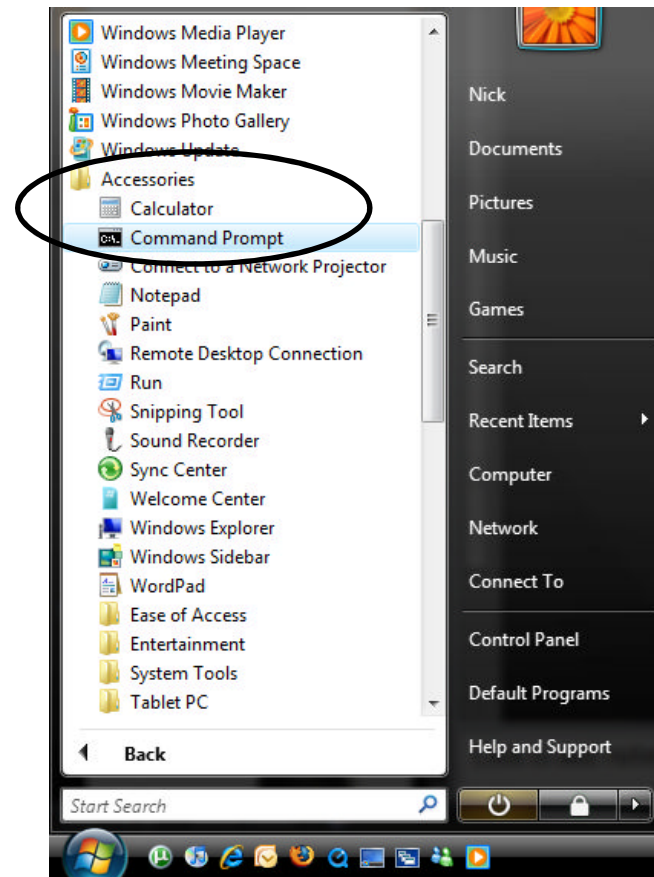
BWRG1000 and BWRG500

Configuring as a Router

Obtaining Network Information

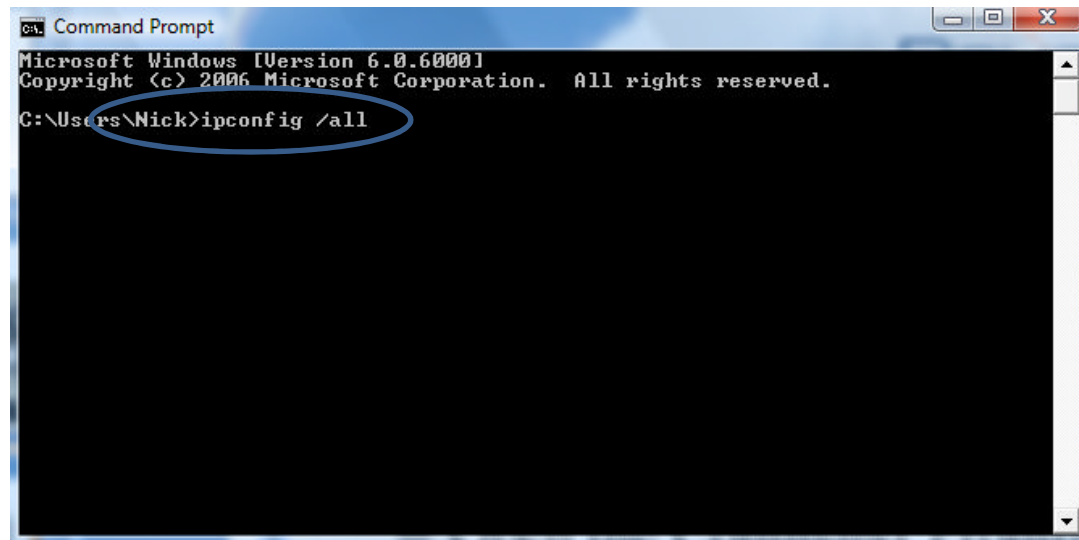
Open Command Prompt by clicking on the start menu opening up the Accessories folder and clicking Command Prompt

Click at the bottom left of your screen to bring up your start menu



Obtaining Network Information

Type in `ipconfig /all`

A screenshot of a Windows Command Prompt window. The title bar reads "Command Prompt". The text inside the window shows the Microsoft Windows version and copyright information, followed by the command `C:\Users\Nick>ipconfig /all`. The command is circled in blue.

```
Command Prompt
Microsoft Windows [Version 6.0.6000]
Copyright (c) 2006 Microsoft Corporation. All rights reserved.
C:\Users\Nick>ipconfig /all
```

Obtaining Network Information

Write down:

IP address

Subnetmask

Default gateway

DNS Servers (1)

DNS Servers (2)

```

C:\ Command Prompt
Microsoft Windows [Version 6.0.6000]
Copyright (c) 2006 Microsoft Corporation. All rights reserved.

C:\Users\Nick>ipconfig /all

Windows IP Configuration

    Host Name . . . . . : Nick-PC
    Primary Dns Suffix . . . . . :
    Node Type . . . . . : Hybrid
    IP Routing Enabled. . . . . : No
    WINS Proxy Enabled. . . . . : No

Wireless LAN adapter Wireless Network Connection:

    Connection-specific DNS Suffix . :
    Description . . . . . : My Essential G USB Adapter
    Physical Address. . . . . : 00-17-3F-34-D2-37
    DHCP Enabled. . . . . : Yes
    Autoconfiguration Enabled . . . . : Yes
    Link-local IPv6 Address . . . . . : fe80::b59a:78cd:832a:ad39%10
    IPv4 Address. . . . . : 192.168.100.16(Preferred)
    Subnet Mask . . . . . : 255.255.255.0
    Lease Obtained. . . . . : Thursday, November 01, 2007
    Lease Expires . . . . . : Thursday, November 01, 2007
    Default Gateway . . . . . : 192.168.100.2
    DHCP Server . . . . . : 192.168.100.2
    DHCPv6 IAID . . . . . : 218109759
    DNS Servers . . . . . : 204.130.255.3
    . . . . . : 64.122.32.71
    NetBIOS over Tcpip. . . . . : Enabled
  
```

Setting up the Hardware

Plug Power supply into router
and into wall



Setting up the Hardware

Connect Ethernet cable into the LAN port of the Bountiful Router



Connect other end of Ethernet cable into your computer



Setting up the Hardware

WLAN should be blinking
after 20 seconds

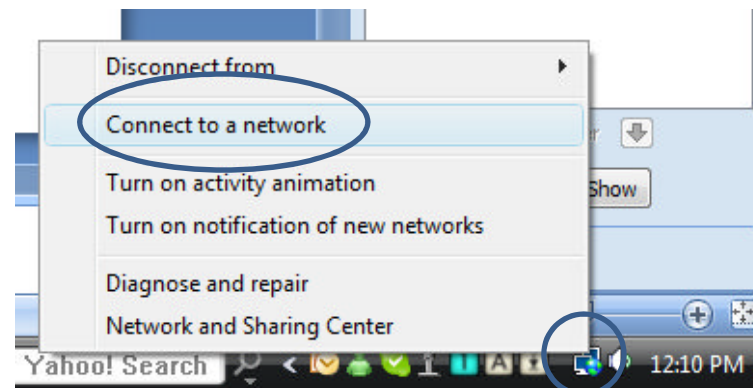
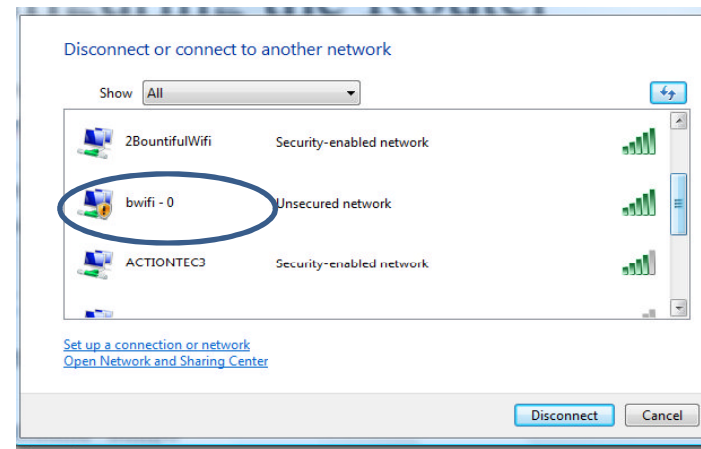


Ensure Power light and
system status light is on
(solid)



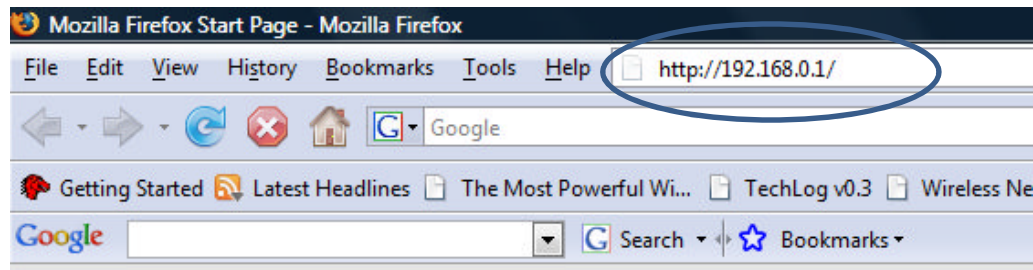
Accessing Web Interface

View wireless networks
and connect to bwifi - 0
Or the SSID assigned to
router



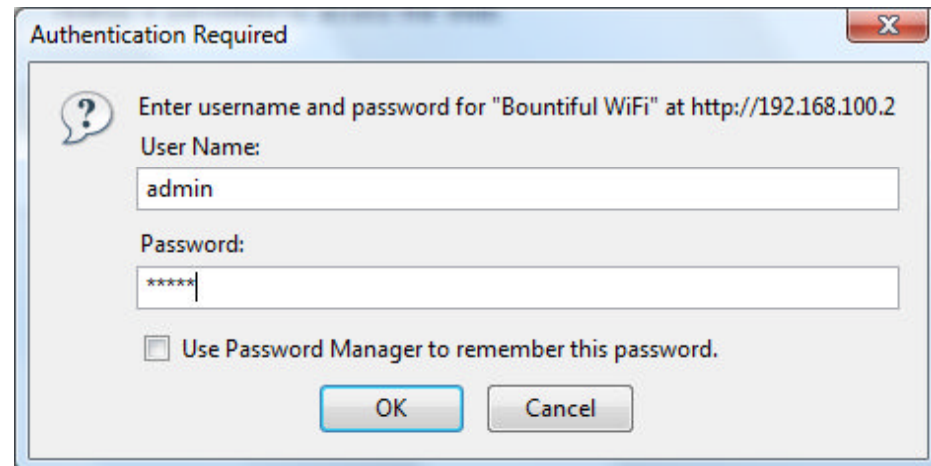
Accessing Web Interface

Open an internet browser and
type in the router IP address
(default=192.168.0.1)
Or the IP address assigned to
the router



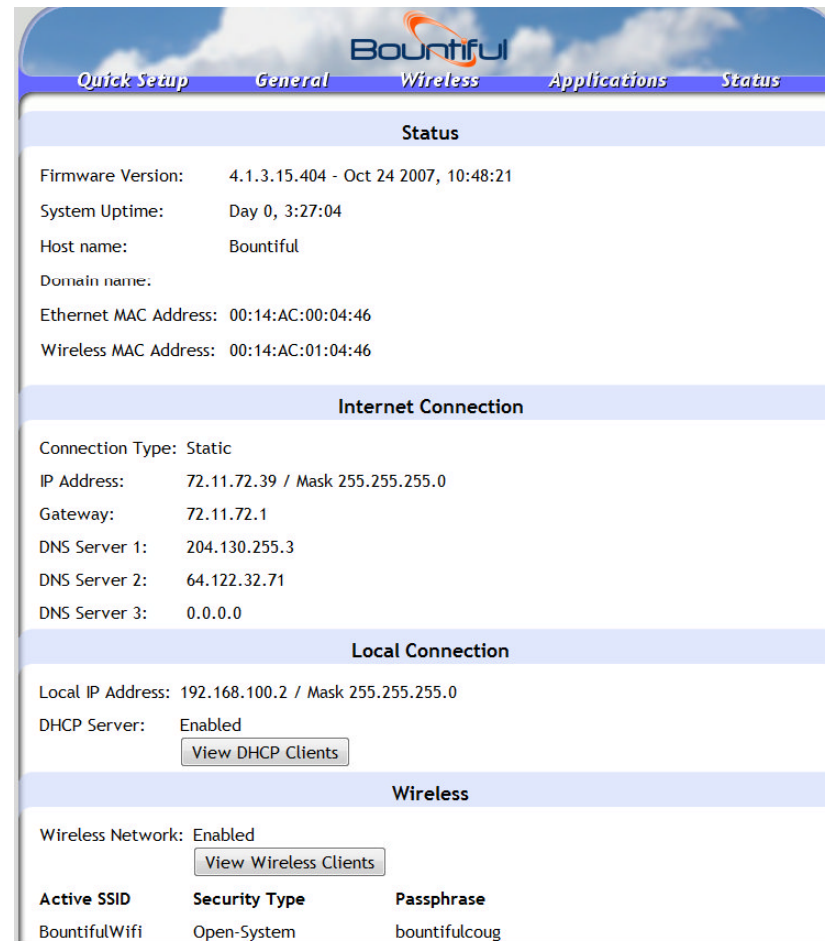
Accessing Web Interface

Type in user name and
password
default username=admin
password =admin
Or the password
assigned to the router



Accessing Web Interface

This is the Bountiful Web Interface



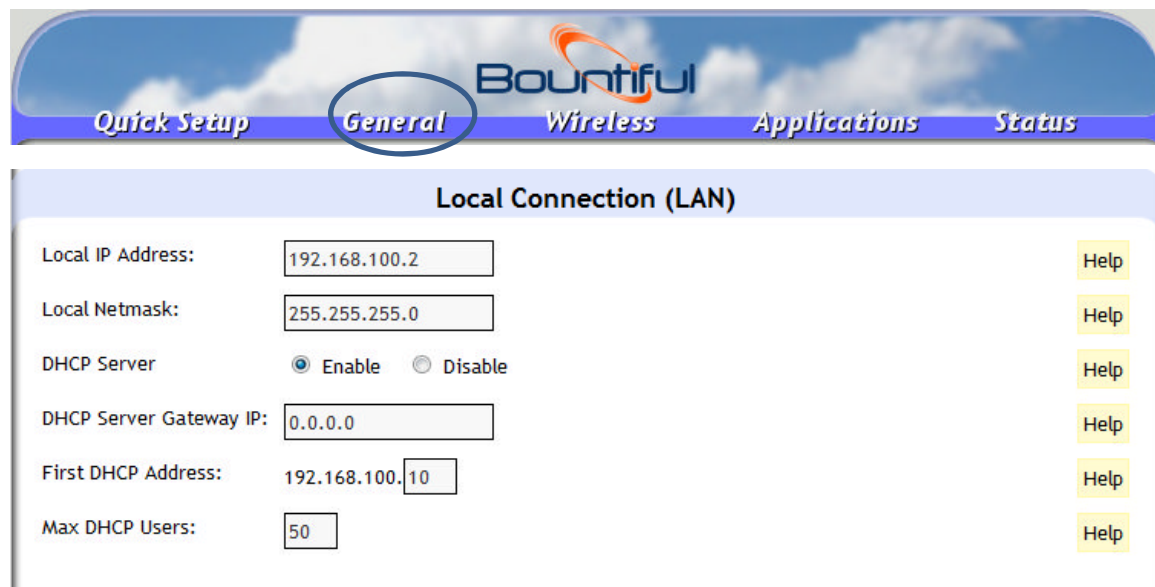
The screenshot displays the Bountiful web interface with the following sections:

- Navigation:** Quick Setup, General, **Wireless**, Applications, Status
- Status:**
 - Firmware Version: 4.1.3.15.404 - Oct 24 2007, 10:48:21
 - System Uptime: Day 0, 3:27:04
 - Host name: Bountiful
 - Domain name:
 - Ethernet MAC Address: 00:14:AC:00:04:46
 - Wireless MAC Address: 00:14:AC:01:04:46
- Internet Connection:**
 - Connection Type: Static
 - IP Address: 72.11.72.39 / Mask 255.255.255.0
 - Gateway: 72.11.72.1
 - DNS Server 1: 204.130.255.3
 - DNS Server 2: 64.122.32.71
 - DNS Server 3: 0.0.0.0
- Local Connection:**
 - Local IP Address: 192.168.100.2 / Mask 255.255.255.0
 - DHCP Server: Enabled
 - [View DHCP Clients](#)
- Wireless:**
 - Wireless Network: Enabled
 - [View Wireless Clients](#)
- Wireless Settings Table:**

Active SSID	Security Type	Passphrase
BountifulWifi	Open-System	bountifulcoug

Configuring the Router

Click on the General tab and scroll down to the Local Connection (LAN)

A screenshot of a router's web-based configuration interface. At the top, there is a navigation bar with five tabs: "Quick Setup", "General", "Wireless", "Applications", and "Status". The "General" tab is selected and circled in blue. Below the navigation bar, the "Local Connection (LAN)" section is visible. It contains several configuration fields: "Local IP Address" (192.168.100.2), "Local Netmask" (255.255.255.0), "DHCP Server" (radio buttons for "Enable" and "Disable", with "Enable" selected), "DHCP Server Gateway IP" (0.0.0.0), "First DHCP Address" (192.168.100.10), and "Max DHCP Users" (50). To the right of each field is a yellow "Help" button.

Configuring the Router

Take out the network configuration list and make note of default gateway subnet

```

C:\> Command Prompt
Microsoft Windows [Version 6.0.6000]
Copyright (c) 2006 Microsoft Corporation. All rights reserved.

C:\Users\Nick>ipconfig /all

Windows IP Configuration

    Host Name . . . . . : Nick-PC
    Primary Dns Suffix . . . . . :
    Node Type . . . . . : Hybrid
    IP Routing Enabled. . . . . : No
    WINS Proxy Enabled. . . . . : No

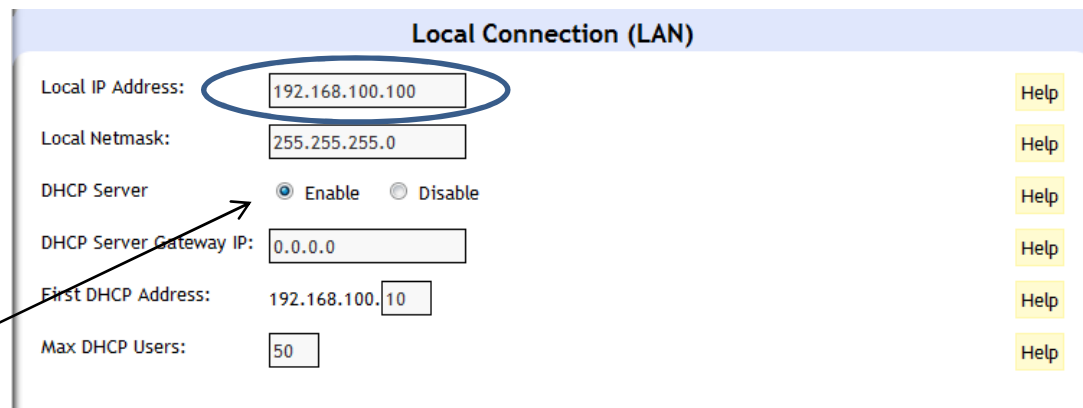
Wireless LAN adapter Wireless Network Connection:

    Connection-specific DNS Suffix . . . :
    Description . . . . . : My Essential G USB Adapter
    Physical Address. . . . . : 00-17-3F-34-D2-37
    DHCP Enabled. . . . . : Yes
    Autoconfiguration Enabled . . . . . : Yes
    Link-local IPv6 Address . . . . . : fe80::b59a:78cd:832a:ad39%10
    IPv4 Address. . . . . : 192.168.100.16(Preferred)
    Subnet Mask . . . . . : 255.255.255.0
    Lease Obtained. . . . . : Thursday, November 01, 2007
    Lease Expires . . . . . : Thursday, November 01, 2007
    Default Gateway . . . . . : 192.168.100.2
    DHCP Server . . . . . : 192.168.100.2
    DHCPv6 IAID . . . . . : 218109759
    DNS Servers . . . . . : 204.130.255.3
    . . . . . : 64.122.32.71
    NetBIOS over Tcpip. . . . . : Enabled
  
```

Configuring the Router

Type in Local IP
address using
the same subnet
but with
different ending

DHCP Server
Enabled

A screenshot of a router's configuration interface for a "Local Connection (LAN)". The interface is a light blue box with a title bar. It contains several configuration fields: "Local IP Address" (192.168.100.100, circled in blue), "Local Netmask" (255.255.255.0), "DHCP Server" (radio buttons for "Enable" and "Disable", with "Enable" selected), "DHCP Server Gateway IP" (0.0.0.0), "First DHCP Address" (192.168.100.10), and "Max DHCP Users" (50). To the right of each field is a yellow "Help" button. An arrow points from the text "DHCP Server Enabled" to the "Enable" radio button.

Configuring the Router

Scroll to the bottom of the page and submit the changes then Click reboot to reboot router

A rectangular button with a light gray gradient and a thin black border, containing the word "Submit" in a blue sans-serif font.

Hardware Set up

The Ethernet Cable should be connect into the Ethernet port of the DSL modem and the LAN port of the Gateway or other router.

The Ethernet cable should be connected into the WAN port of the Bountiful Router



This now ends,
configuring the
Bountiful Router as a
router