

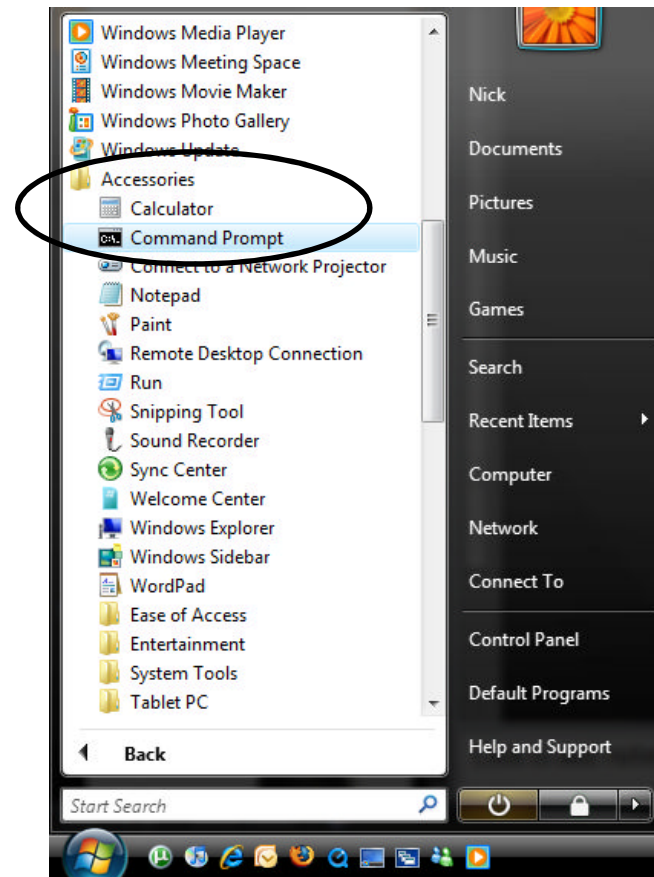
# **BWRG1000 and BWRG500**

Router configuration with a Cable  
Modem

# Obtaining Network Information

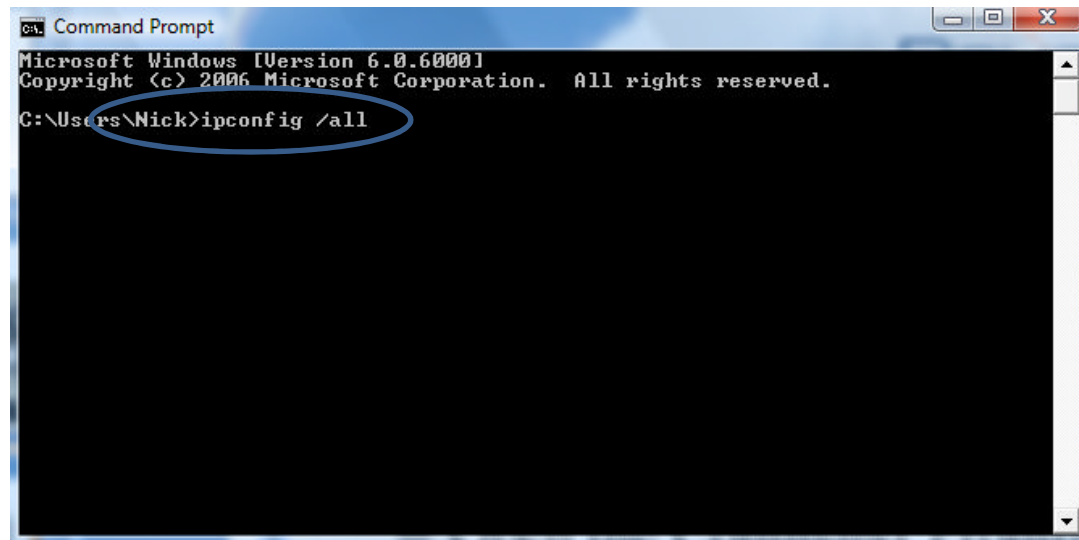
Open Command Prompt by clicking on the start menu opening up the Accessories folder and clicking Command Prompt

Click at the bottom left of your screen to bring up your start menu



# Obtaining Network Information

Type in `ipconfig /all`

A screenshot of a Windows Command Prompt window. The title bar reads "Command Prompt". The text inside the window shows the Microsoft Windows version and copyright information, followed by the command `C:\Users\Nick>ipconfig /all`. The command is circled in blue. The rest of the window is black with no output visible.

```
Command Prompt
Microsoft Windows [Version 6.0.6000]
Copyright (c) 2006 Microsoft Corporation. All rights reserved.
C:\Users\Nick>ipconfig /all
```

# Obtaining Network Information

Write down:

IP address

Subnetmask

Default gateway

DNS Servers (1)

DNS Servers (2)

```
Command Prompt
Microsoft Windows [Version 6.0.6000]
Copyright (c) 2006 Microsoft Corporation. All rights reserved.

C:\Users\Nick>ipconfig /all

Windows IP Configuration

    Host Name . . . . . : Nick-PC
    Primary Dns Suffix . . . . . :
    Node Type . . . . . : Hybrid
    IP Routing Enabled. . . . . : No
    WINS Proxy Enabled. . . . . : No

Wireless LAN adapter Wireless Network Connection:

    Connection-specific DNS Suffix . :
    Description . . . . . : My Essential G USB Adapter
    Physical Address. . . . . : 00-17-3F-34-D2-37
    DHCP Enabled. . . . . : Yes
    Autoconfiguration Enabled . . . . : Yes
    Link-local IPv6 Address . . . . . : fe80::b59a:78cd:832a:ad39%10
    IPv4 Address. . . . . : 192.168.100.16(Preferred)
    Subnet Mask . . . . . : 255.255.255.0
    Lease Obtained. . . . . : Thursday, November 01, 2007
    Lease Expires . . . . . : Thursday, November 01, 2007
    Default Gateway . . . . . : 192.168.100.2
    DHCP Server . . . . . : 192.168.100.2
    DHCPv6 IAID . . . . . : 218109759
    DNS Servers . . . . . : 204.130.255.3
    . . . . . : 64.122.32.71
    NetBIOS over Tcpip. . . . . : Enabled
```

# Setting up the Hardware

Plug Power supply into router  
and into wall



# Setting up the Hardware

Connect Ethernet cable into the LAN port of the Bountiful Router



Connect other end of Ethernet cable into your computer



# Setting up the Hardware

WLAN should be blinking  
after 20 seconds

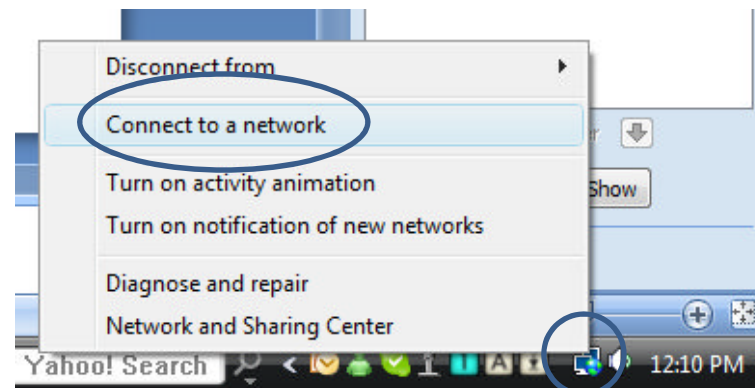
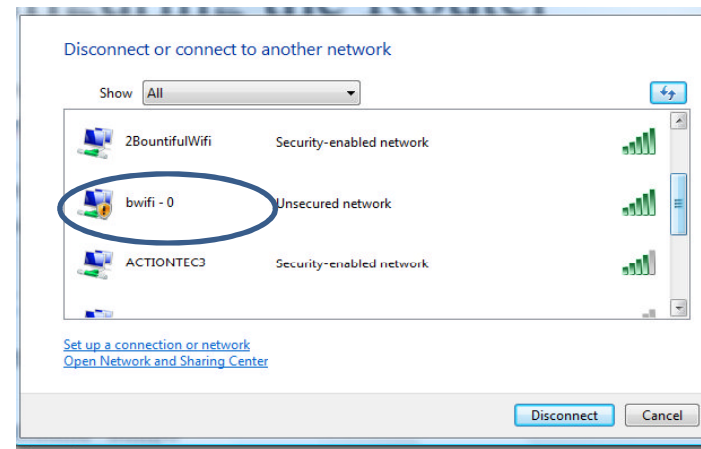


Ensure Power light and  
system status light is on  
(solid)



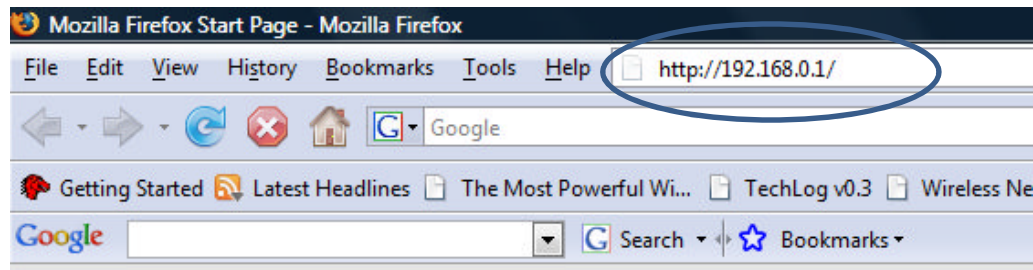
# Accessing Web Interface

View wireless networks  
and connect to bwifi - 0  
Or the SSID assigned to  
router



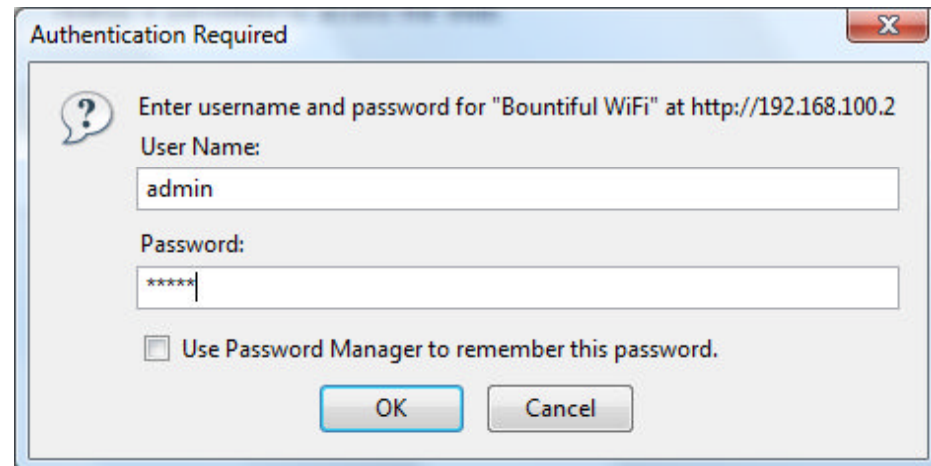
# Accessing Web Interface

Open an internet browser and  
type in the router IP address  
(default=192.168.0.1)  
Or the IP address assigned to  
the router



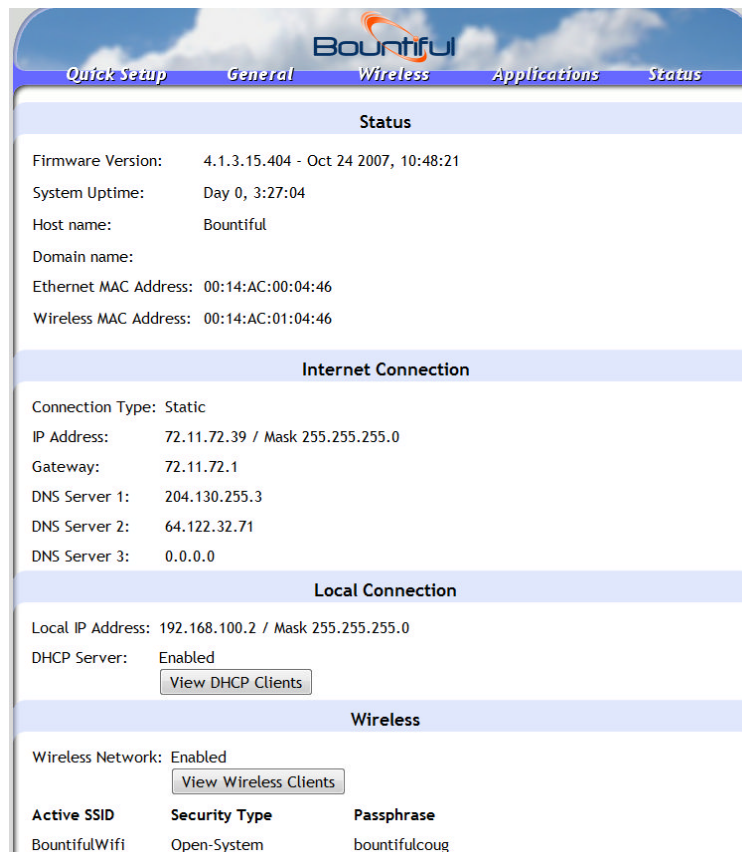
# Accessing Web Interface

Type in user name and  
password  
default username=admin  
password =admin  
Or the password  
assigned to the router



# Accessing Web Interface

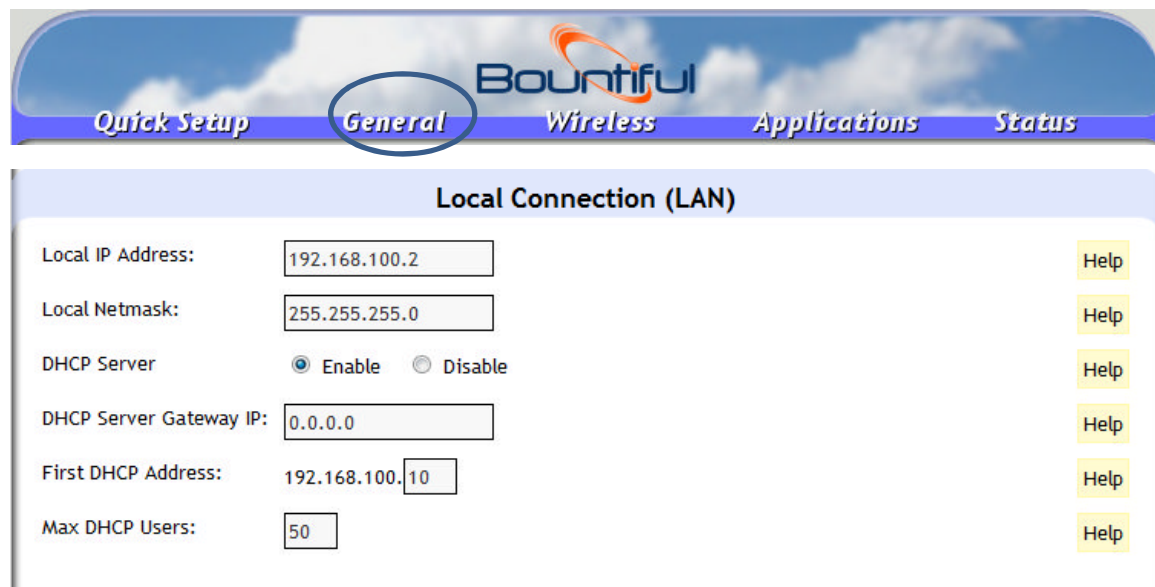
This is the  
Bountiful Web  
Interface

A screenshot of the Bountiful web interface. The top navigation bar includes "Quick Setup", "General", "Wireless", "Applications", and "Status". The "Status" section displays system information: Firmware Version (4.1.3.15.404 - Oct 24 2007, 10:48:21), System Uptime (Day 0, 3:27:04), Host name (Bountiful), Domain name, Ethernet MAC Address (00:14:AC:00:04:46), and Wireless MAC Address (00:14:AC:01:04:46). The "Internet Connection" section shows a static connection with IP 72.11.72.39, gateway 72.11.72.1, and three DNS servers. The "Local Connection" section shows a local IP of 192.168.100.2 and a DHCP server that is enabled, with a "View DHCP Clients" button. The "Wireless" section shows the wireless network is enabled, with a "View Wireless Clients" button. At the bottom, a table lists the active SSID, security type, and passphrase.

Active SSID	Security Type	Passphrase
BountifulWifi	Open-System	bountifulcoug

# Configuring the Router

Click on the General tab and scroll down to the Local Connection (LAN)

A screenshot of a router's web-based configuration interface. At the top, there is a navigation bar with five tabs: "Quick Setup", "General", "Wireless", "Applications", and "Status". The "General" tab is selected and circled in blue. Below the navigation bar, the "Local Connection (LAN)" section is visible. It contains several configuration fields: "Local IP Address" (192.168.100.2), "Local Netmask" (255.255.255.0), "DHCP Server" (radio buttons for "Enable" and "Disable", with "Enable" selected), "DHCP Server Gateway IP" (0.0.0.0), "First DHCP Address" (192.168.100.10), and "Max DHCP Users" (50). To the right of each field is a yellow "Help" button.

Local Connection (LAN)		
Local IP Address:	<input type="text" value="192.168.100.2"/>	<a href="#">Help</a>
Local Netmask:	<input type="text" value="255.255.255.0"/>	<a href="#">Help</a>
DHCP Server	<input checked="" type="radio"/> Enable <input type="radio"/> Disable	<a href="#">Help</a>
DHCP Server Gateway IP:	<input type="text" value="0.0.0.0"/>	<a href="#">Help</a>
First DHCP Address:	<input type="text" value="192.168.100.10"/>	<a href="#">Help</a>
Max DHCP Users:	<input type="text" value="50"/>	<a href="#">Help</a>

# Configuring the Router

Take out the network configuration list and make note of default gateway subnet

```

C:\> Command Prompt
Microsoft Windows [Version 6.0.6000]
Copyright (c) 2006 Microsoft Corporation. All rights reserved.

C:\Users\Nick>ipconfig /all

Windows IP Configuration

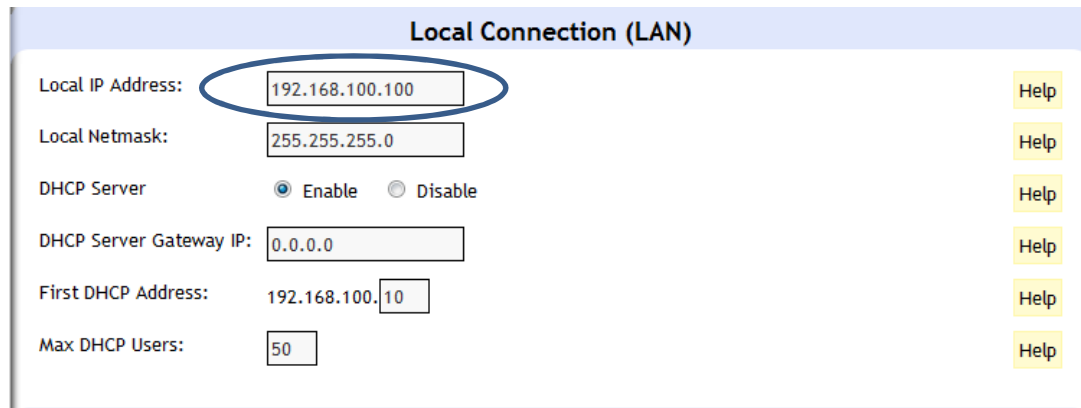
    Host Name . . . . . : Nick-PC
    Primary Dns Suffix . . . . . :
    Node Type . . . . . : Hybrid
    IP Routing Enabled. . . . . : No
    WINS Proxy Enabled. . . . . : No

Wireless LAN adapter Wireless Network Connection:

    Connection-specific DNS Suffix . . . :
    Description . . . . . : My Essential G USB Adapter
    Physical Address. . . . . : 00-17-3F-34-D2-37
    DHCP Enabled. . . . . : Yes
    Autoconfiguration Enabled . . . . . : Yes
    Link-local IPv6 Address . . . . . : fe80::b59a:78cd:832a:ad39%10
    IPv4 Address. . . . . : 192.168.100.16(Preferred)
    Subnet Mask . . . . . : 255.255.255.0
    Lease Obtained. . . . . : Thursday, November 01, 2007
    Lease Expires . . . . . : Thursday, November 01, 2007
    Default Gateway . . . . . : 192.168.100.2
    DHCP Server . . . . . : 192.168.100.2
    DHCPv6 IAID . . . . . : 218109759
    DNS Servers . . . . . : 204.130.255.3
    . . . . . : 64.122.32.71
    NetBIOS over Tcpip. . . . . : Enabled
  
```

# Configuring the Router

Type in Local IP address using the same subnet but with different ending

A screenshot of a router's web interface for configuring the Local Connection (LAN). The page has a light blue header with the title "Local Connection (LAN)". Below the header, there are several configuration fields, each with a "Help" button to its right. The "Local IP Address" field is circled in blue and contains the value "192.168.100.100". The "Local Netmask" field contains "255.255.255.0". The "DHCP Server" section has two radio buttons: "Enable" (selected) and "Disable". The "DHCP Server Gateway IP" field contains "0.0.0.0". The "First DHCP Address" field contains "192.168.100.10". The "Max DHCP Users" field contains "50".

Local Connection (LAN)		
Local IP Address:	192.168.100.100	Help
Local Netmask:	255.255.255.0	Help
DHCP Server	<input checked="" type="radio"/> Enable <input type="radio"/> Disable	Help
DHCP Server Gateway IP:	0.0.0.0	Help
First DHCP Address:	192.168.100.10	Help
Max DHCP Users:	50	Help

# Configuring the Router

Scroll to the bottom of the page and submit the changes then Click reboot to reboot router

A rectangular button with a light gray background and a thin black border, containing the word "Submit" in a blue sans-serif font.

This now ends,  
Configuring the  
Bountiful Router  
with a cable modem